

PHILIPS

LCD monitor

Business Monitor

2000 series

24 (23.8" / 60.47 cm diag.)

1920 x 1080 (Full HD)

24B2N2200



Empower daily efficiency

This monitor delivers business efficiency. Not only is it equipped with essential features, but it also has ones that stand out like its 120hz refresh rate, SoftBlue, Flicker-Free, VESA mount, and more.

Designed for the way you work

- Built-in stereo speakers for multimedia
- Eyesafe certified blue light protection and color accuracy
- SoftBlue Technology: for comfortable viewing
- Less eye fatigue with Flicker-free technology
- EasyRead mode for a paper-like reading experience

Great performance

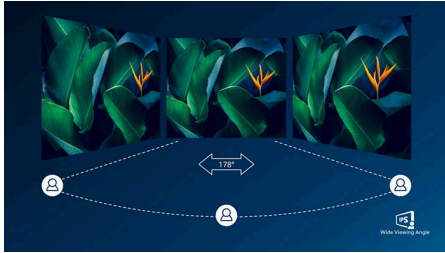
- 120Hz refresh rates for ultra-smooth images
- IPS LED wide view technology for image and color accuracy
- 16:9 Full HD display for crisp detailed images

Easy to experience

- VESA mount for convenience
- HDMI ensures universal digital connectivity

Highlights

IPS technology



IPS displays use an advanced technology which gives you extra wide viewing angles of 178/178 degree, making it possible to view the display from almost any angle. Unlike standard TN panels, IPS displays gives you remarkably crisp images with vivid colors, making it ideal not only for Photos, movies and web browsing, but also for professional applications which demand color accuracy and consistent brightness at all times.

16:9 Full HD display



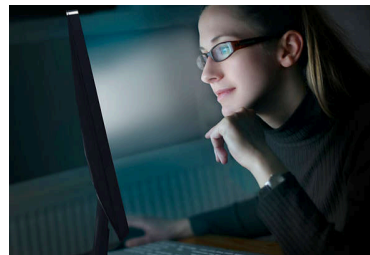
Picture quality matters. Regular displays deliver quality, but you expect more. This display features enhanced Full HD 1920 x 1080 resolution. With Full HD for crisp detail paired with high brightness, incredible contrast and realistic colors expect a true to life picture.

120Hz Fast refresh



For gaming and video performance, you demand display with lag free, ultra-smooth images. This Philips display redraws the screen image up-to 120 times per second, much faster than a standard display. A lower frame rate can make enemies appear to jump from spot to spot on the screen, making them difficult targets to hit. With 120Hz frame rate, you get those critical missing images on the screen which shows enemy movement in ultra-smooth motion so you can easily target them.

SoftBlue Technology



SoftBlue LED technology, combined with the monitor's low blue light panel, is an effective solution to reducing the adverse health effects caused by high exposure to blue light. In this monitor's panel, the ratio of light is reduced by nearly 50% while the SoftBlue LED technology works simultaneously by reducing harmful blue light rays emitted from the screen. Not to mention, the SoftBlue LED technology is tested and certified by TUV Rheinland Eyesafe for its effectiveness in reducing blue light emissions.

Flicker-free technology



Due to the way brightness is controlled on LED-backlit screens, some users experience flicker on their screen which causes eye fatigue. Philips Flicker-free Technology applies a new solution to regulate brightness and reduce flicker for more comfortable viewing.

EasyRead mode



EasyRead mode for a paper-like reading experience

TUV Rheinland Eyesafe - RPF 40



Philips display meets TUV Rheinland Eyesafe® standard to truly protect you from the long exposure to blue light. The always-on blue light filter not only helps reduce digital eye strain, but also guarantees color integrity.



Highlights

Built-in stereo speakers



A pair of high quality stereo speakers built into a display device. It can be visible front firing, or invisible down firing, top firing, rear firing, etc depending on model and design.

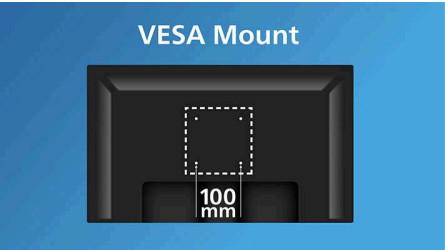
HDMI Ready



An HDMI-ready device has all the required hardware to accept High-Definition Multimedia Interface (HDMI) input. A HDMI cable enables high-quality digital video and audio all

transmitted over a single cable from a PC or any number of AV sources (including set-top boxes, DVD players, A/V receivers and video cameras).

VESA mount for convenience



VESA mount for convenience



Specifications

Picture/Display

Panel Size: 23.8 inch/60.47 cm
Aspect ratio: 16:9
LCD panel type: IPS technology
Backlight type: W-LED system
Pixel pitch: 0.2745(H)mm x 0.2745(V)mm
Brightness: 300 cd/m²
Display colors: 16.7M (8 bits)
Color gamut (typical): NTSC 96%*, sRGB 110%*
Contrast ratio (typical): 1500:1
SmartContrast: 50,000,000:1
Response time (typical): 4 ms (Gray to Gray)*
Viewing angle: 178° (H) / 178° (V), @ C/R > 10
Picture enhancement: SmartImage
Maximum resolution: VGA:1920x1080@75Hz;
HDMI/ DP: 1920x1080@120Hz.
Effective viewing area: 527.04(H) x 296.46(V)
mm
Scanning Frequency: VGA: 30k - 85 KHz (H)/ 48
Hz - 75 Hz (V); HDMI/DP: 30k - 140 kHz (H)/ 48 -
120 Hz (V)
sRGB
SoftBlue
Flicker-free
Pixel Density: 93 PPI
Display Screen Coating: Anti-Glare, 3H, Haze
25%
EasyRead
Adaptive sync
EyeSafe

Connectivity

Signal Input: VGA X 1, HDMI 1.4 X1, DP 1.2x1
Sync Input: Separate Sync, Sync on Green
Audio (In/Out): Audio out, Audio-in
HDCP: HDCP 1.4 (HDMI/DP)

Convenience

Built-in Speakers: 2Wx2
Plug & Play Compatibility: DDC/CI, Mac OS X,
sRGB, Windows 11 / 10
User convenience: SmartImage, Input,
Brightness, Menu, Power On/Off
OSD Languages: Brazil Portuguese, Czech, Dutch,
English, French, Finnish, German, Greek,
Hungarian, Italian, Japanese, Korean,
Portuguese, Polish, Russian, Simplified Chinese,

Spanish, Swedish, Traditional Chinese, Turkish,
Ukrainian

Other convenience: Kensington lock, VESA
mount (100x100mm)

Control software: SmartControl

Stand

Tilt: -5/25 degree

Power

ECO mode: 8.2 W (typ.)
Power supply: Built-in, 100-240VAC, 50-60Hz
Off mode: 0.3 W (typ.)
On mode: 11.42 W (typ.) (EnergyStar test
method)
Standby mode: 0.3 W (typ.)
Power LED indicator: Operation - White, Standby
mode- White (blinking)
Energy Label Class: B

Dimensions

Packaging in mm (WxHxD): 600 x 420 x 123 mm
Product without stand (mm): 542 x 320 x 46 mm
Product with stand(max height): 542 x 425 x
181 mm

Weight

Product with packaging (kg): 4.90 kg
Product with stand (kg): 2.91 kg
Product without stand (kg): 2.63 kg

Operating conditions

Altitude: Operation: +12,000ft (3,658m), Non-
operation: +40,000ft (12,192m)
Temperature range (operation): 0°C to 40 °C
Relative humidity: 20%-80 %
Temperature range (storage): -20°C to 60 °C
MTBF (demonstrated): 70,000 hrs (excluded
backlight)

Sustainability

Environmental and energy: Energy Star, EPEAT*,
RoHS
Post consumer recycled plastic: 85%
Recyclable packaging material: 100 %
Specific Substances: Mercury free, PVC / BFR free
housing

Compliance and standards

Regulatory Approvals: CB, CE Mark, TUV/GS,
TUV Ergo, TCO Certified, TCO Certified Edge,
EAC, EAC ROHS, MEPS, PSB, UKCA, EMF, FCC,
ICES-003, TÜV Rheinland Low Blue Light
(Hardware Solution), eyesafe[®] CERTIFIED 2.0

Cabinet

Finish: Texture
Foot: Black
Front bezel: Black
Rear cover: Black

